



## The Kelly 14.5

# \$509,510

### TRUE VALUE HOMES

Lot 1852

Area: 463m<sup>2</sup>

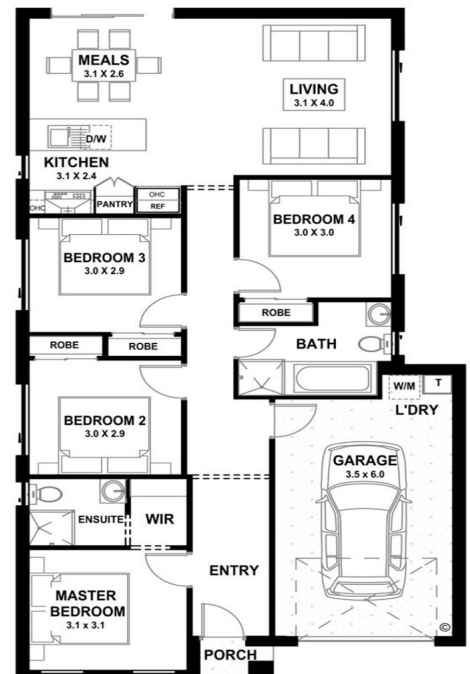
Frontage: 14.02m

Depth: 34.73m

BED **4** BATH **2** CAR **1**

### INCLUSIONS

- Fixed site cost including connections.
- Plush carpet with underlay to all bedrooms.
- Coloured concrete driveway and path including front porch.
- 900mm Stainless Steel Upright dual fuel cooker.
- 900mm Stainless Steel canopy rangehood.
- Seamless tiled shower bases with chrome waste.
- Flyscreens to all openable windows.
- Chrome designer adjustable shower rails.
- Concrete letterbox with chrome house number/s.



Speak to our Sales Agent for more information on 1300 001 687.

