



Maple 12
\$393,600

HOMEBUYERS CENTRE

Lot 1849

Area: 179m²

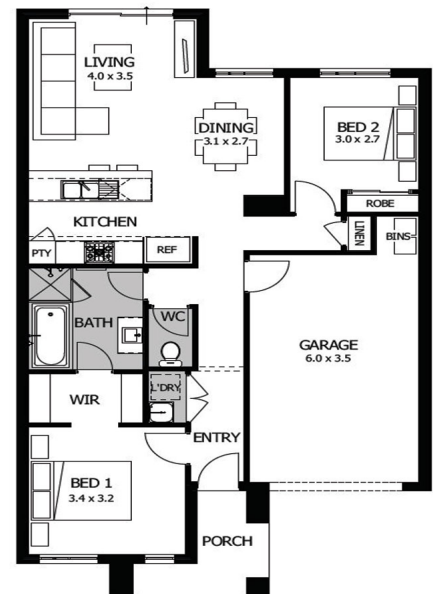
Frontage: 8.50m

Depth: 21m

BED 2 BATH 1 CAR 1

INCLUSIONS

- Fixed site costs
- Quality floor coverings throughout
- Stylish Blinds
- Flyscreens
- Westinghouse stainless steel appliances
- Overhead cupboards to kitchen
- Exposed aggregate driveway
- Sectional garage door with 2 remotes



Speak to our Sales Agent for more information on 1300 001 687.

