



Kiama 226

\$588,205

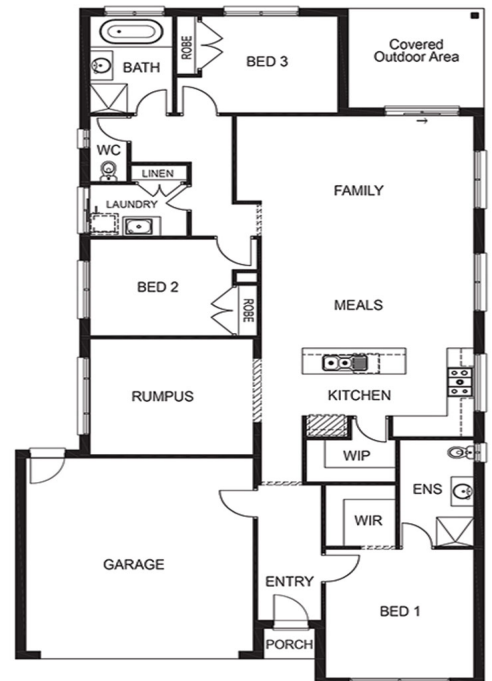
FAIRHAVEN HOMES

Lot 1857
 Area: 446m²
 Frontage: 12.50m
 Depth: 35.04m

BED **3** BATH **2** CAR **2**

INCLUSIONS

- Up to \$30,000 of upgrades (House specific)
- Developers Guidelines
- Fixed Site Costs
- Colorbond Roof
- 900mm Stainless Steel Upright Cooker
- 900mm Stainless Steel Canopy Rangehood
- Soft Close hinged door and drawers
- Ducted Heating



Speak to our Sales Agent for more information on 1300 001 687.



VISUAL, VERBAL OR WRITTEN PLANS, ILLUSTRATIONS, IMAGES AND INFORMATION ARE IMPRESSIONS OF THORNHILL PARK. THESE PLANS, ILLUSTRATIONS, IMAGES AND INFORMATION (INCLUDING BUT NOT LIMITED TO PRICE, AVAILABILITY, DATES, PLANS, SPECIFICATIONS AND CONSTRUCTION OF PROPOSED FACILITIES AND INFRASTRUCTURE) ARE INDICATIVE DEPICTIONS FOR PRESENTATION PURPOSES ONLY AND ARE BELIEVED TO BE CORRECT AT THE TIME OF PUBLISHING BUT ARE SUBJECT TO CHANGE WITHOUT NOTICE. AREAS, LOCATIONS AND DIMENSIONS ARE APPROXIMATES ONLY AND ARE SUBJECT TO SURVEY. FUTURE TRANSPORT AND OTHER INFRASTRUCTURE AND FACILITIES AND FEATURES ARE PROVIDED FOR IN THE PRECINCT STRUCTURE PLAN BUT THE SIZE AND LOCATION IS SUBJECT TO DELIVERY BY THIRD PARTIES, SITE AND MARKET CONDITIONS, REGULATORY APPROVALS, FINAL PLANS AND OTHER FACTORS AND ARE NOT TO BE RELIED UPON AS NO WARRANTY OR REPRESENTATION IS GIVEN OR TO BE CONSTRUED. PURCHASERS SHOULD MAKE THEIR OWN ENQUIRIES, REVIEW CONTRACTS CAREFULLY AND OBTAIN INDEPENDENT ADVICE BEFORE PURCHASING.