



Saffire 22 \$509,700

AUSTRALIAN BUILDING CO

Lot 1831

Area: 392m²

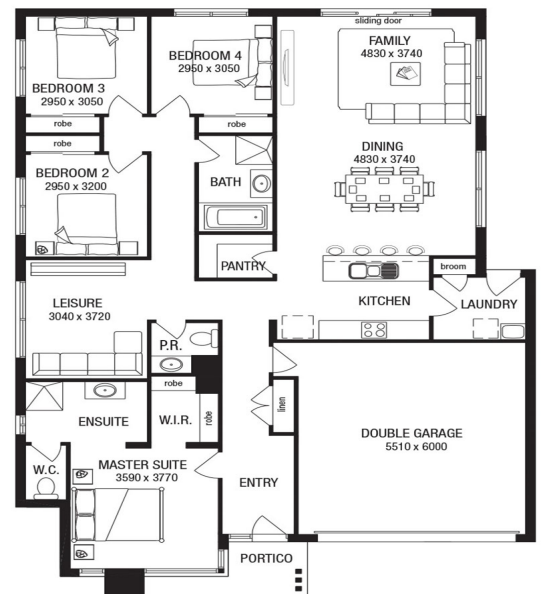
Frontage: 14m

Depth: 28m

BED 4 BATH 2 CAR 2

INCLUSIONS

- Provisional site costs
- Stylish laminate flooring to entry, kitchen, family and dining[^]
- Stainless steel oven
- Stainless steel glass canopy range hood
- Stainless steel cooktop
- Shoppers access door
- Council and developer guidelines



Speak to our Sales Agent for more information on 1300 001 687.

