



Adelaide 24
\$508,930

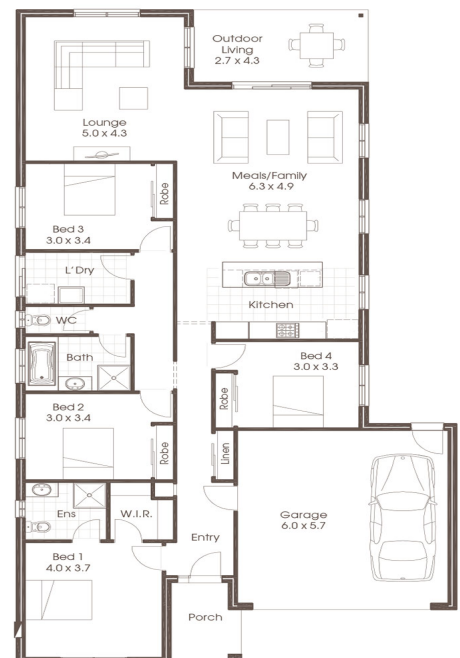
CAVALIER HOMES

Lot 2554
Area: 350m²
Frontage: 12.5m
Depth: 28m

BED 4 BATH 2 CAR 2

INCLUSIONS

- Aspire Standard inclusions
- Colourbond Roofing
- 3 Coat Paint system
- Ducted heating
- NBN connection
- Stainless Steel Canopy Rangehood
- Solar Hot Water Service with Gas booster
- Design your own colours at our Designer Studio
- Deal direct with the Directors.



Speak to our Sales Agent for more information on 1300 001 687.



VISUAL, VERBAL OR WRITTEN PLANS, ILLUSTRATIONS, IMAGES AND INFORMATION ARE IMPRESSIONS OF THORNHILL PARK. THESE PLANS, ILLUSTRATIONS, IMAGES AND INFORMATION (INCLUDING BUT NOT LIMITED TO PRICE, AVAILABILITY, DATES, PLANS, SPECIFICATIONS AND CONSTRUCTION OF PROPOSED FACILITIES AND INFRASTRUCTURE) ARE INDICATIVE DEPICTIONS FOR PRESENTATION PURPOSES ONLY AND ARE BELIEVED TO BE CORRECT AT THE TIME OF PUBLISHING BUT ARE SUBJECT TO CHANGE WITHOUT NOTICE. AREAS, LOCATIONS AND DIMENSIONS ARE APPROXIMATES ONLY AND ARE SUBJECT TO SURVEY. FUTURE TRANSPORT AND OTHER INFRASTRUCTURE AND FACILITIES AND FEATURES ARE PROVIDED FOR IN THE PRECINCT STRUCTURE PLAN BUT THE SIZE AND LOCATION IS SUBJECT TO DELIVERY BY THIRD PARTIES, SITE AND MARKET CONDITIONS, REGULATORY APPROVALS, FINAL PLANS AND OTHER FACTORS AND ARE NOT TO BE RELIED UPON AS NO WARRANTY OR REPRESENTATION IS GIVEN OR TO BE CONSTRUED. PURCHASERS SHOULD MAKE THEIR OWN ENQUIRIES, REVIEW CONTRACTS CAREFULLY AND OBTAIN INDEPENDENT ADVICE BEFORE PURCHASING.