



## Chesterton 21\_203

# \$521,500

### SIMONDS

Lot 1831

Area: 392m<sup>2</sup>

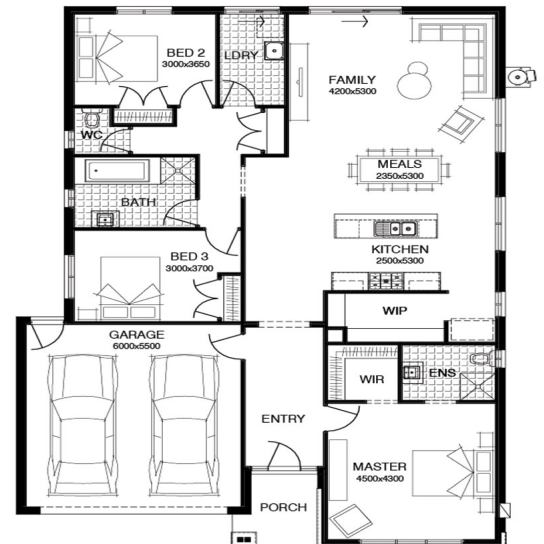
Frontage: 14m

Depth: 28m

BED **3** BATH **2** CAR **2**

### INCLUSIONS

- \$20,000 OF FREE UPGRADES
- DEVELOPER AND COUNCIL REQUIREMENTS
- UP TO 50M<sup>2</sup> TIMBER FLOORING LAMINATE
- UP TO 40M<sup>2</sup> OF 100MM COLOURED THROUGH CONCRETE
- SECTIONAL LIFT GARAGE DOOR
- TECHNIKA 900MM STAINLESS STEEL



Speak to our Sales Agent for more information on 1300 001 687.

