



Bramston 15_140

\$411,512

SIMONDS

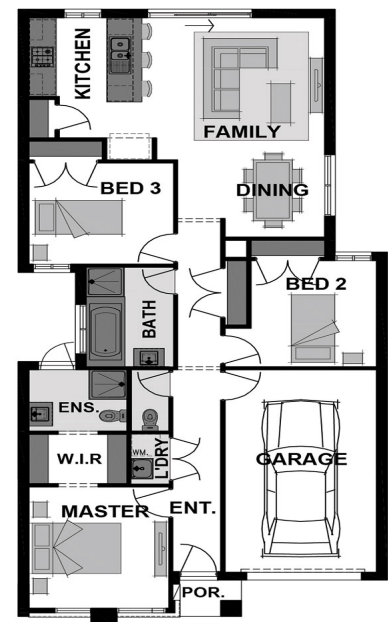
Lot 106
 Area: 272m²
 Frontage: 8.5m
 Depth: 32m

BED **3** BATH **2** CAR **1**

INCLUSIONS

- WELLNESS - DARWIN ESSENTIALS PACK
- DEVELOPER & COUNCIL REQS
- PART A & B TERMITE PROTECTION
- 3 COAT PAINT APPLICATION
- 450MM EAVES TO FACADE
- SECTIONAL LIFT GARAGE DOOR
- KEYED WINDOW LOCKS TO ALL OPENABLE WINDOWS
- 600MM STAINLESS STEEL APPLIANCES
- TILED SHOWER BASES
- INTERNAL & EXTERNAL PACKS AVAILABLE

Speak to our Sales Agent for more information on 1300 001 687.



VISUAL, VERBAL OR WRITTEN PLANS, ILLUSTRATIONS, IMAGES AND INFORMATION ARE IMPRESSIONS OF THORNHILL PARK. THESE PLANS, ILLUSTRATIONS, IMAGES AND INFORMATION (INCLUDING BUT NOT LIMITED TO PRICE, AVAILABILITY, DATES, PLANS, SPECIFICATIONS AND CONSTRUCTION OF PROPOSED FACILITIES AND INFRASTRUCTURE) ARE INDICATIVE DEPICTIONS FOR PRESENTATION PURPOSES ONLY AND ARE BELIEVED TO BE CORRECT AT THE TIME OF PUBLISHING BUT ARE SUBJECT TO CHANGE WITHOUT NOTICE. AREAS, LOCATIONS AND DIMENSIONS ARE APPROXIMATES ONLY AND ARE SUBJECT TO SURVEY. FUTURE TRANSPORT AND OTHER INFRASTRUCTURE AND FACILITIES AND FEATURES ARE PROVIDED FOR IN THE PRECINCT STRUCTURE PLAN BUT THE SIZE AND LOCATION IS SUBJECT TO DELIVERY BY THIRD PARTIES, SITE AND MARKET CONDITIONS, REGULATORY APPROVALS, FINAL PLANS AND OTHER FACTORS AND ARE NOT TO BE RELIED UPON AS NO WARRANTY OR REPRESENTATION IS GIVEN OR TO BE CONSTRUED. PURCHASERS SHOULD MAKE THEIR OWN ENQUIRIES, REVIEW CONTRACTS CAREFULLY AND OBTAIN INDEPENDENT ADVICE BEFORE PURCHASING.