



Dayman 22

\$482,360

CENTRAL PROPERTY

Lot 2522

Area: 371m²

Frontage: 12.5m

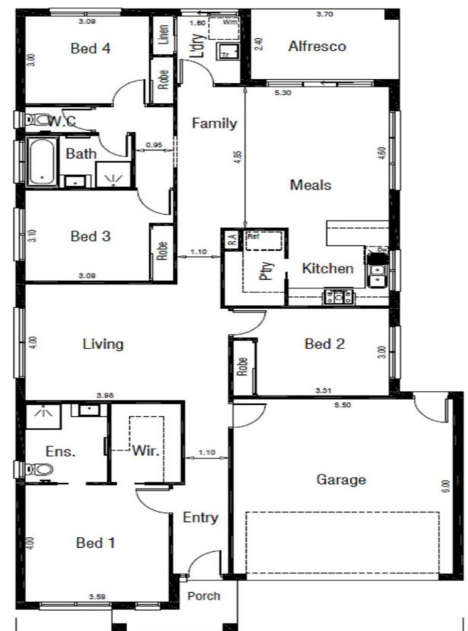
Depth: 30.84m

BED 4 BATH 2 CAR 2

INCLUSIONS

ALL DESIGN GUIDELINES
CHOICE OF FACADE'S
2590 HIGH CEILINGS
FRONT & REAR LANDSCAPING
FENCES, BLINDS & LETTERBOX
900MM APPLIANCES
20MM STONE KIT, ENSUITE & BATHROOM
HEATING AND COOLING
COLOURED CONCRETE DRIVEWAYS & PATH
PLUS MUCH MORE!

Speak to our Sales Agent for more information on 1300 001 687.



DEVELOPED BY
Wel.Co

SOLD BY
RPM
REAL ESTATE GROUP