



## Daylesford 24

# \$496,480

### ASTON HOMES

Lot 2645

Area: 415m<sup>2</sup>

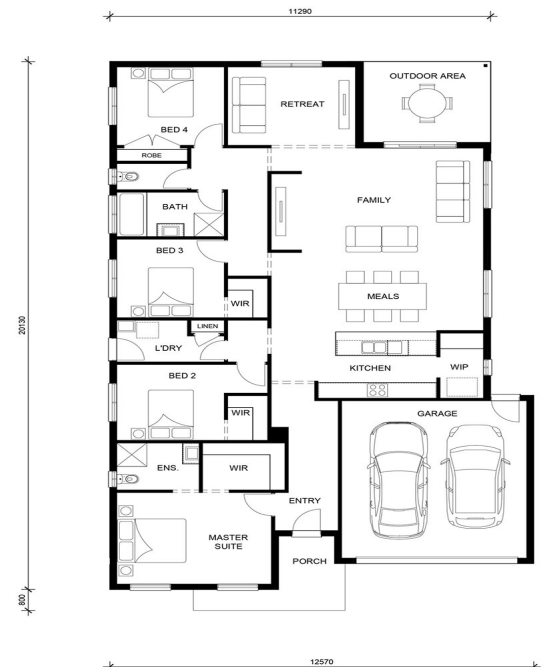
Frontage: 16.22m

Depth: 28m

BED 4 BATH 2 CAR 2

### INCLUSIONS

- 20mm stone benchtops to kitchen
- Carpet to all bedrooms
- Ceramic tiles to all living areas
- Fully rendered home
- H2 waffle pod slab with deepened edge beam
- Panelift garage door
- Site costs included



Speak to our Sales Agent for more information on 1300 001 687.

DEVELOPED BY  
**Wel.Co**

SOLD BY  
**RPM**  
REAL ESTATE GROUP