



Edgewood 25 MK2

\$522,900

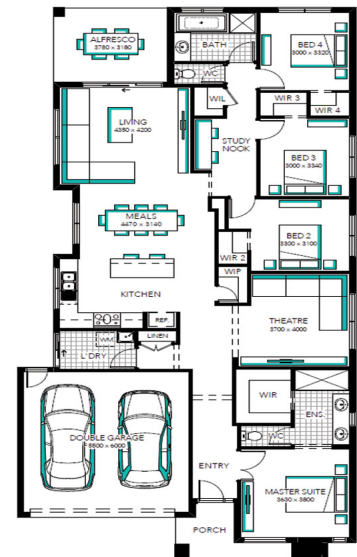
CARLISLE HOMES

Lot 2665
 Area: 400m²
 Frontage: 12.5m
 Depth: 32m

BED 4 BATH 2 CAR 2

INCLUSIONS

FIXED PRICE SITE COSTS AND CONNECTIONS
 DEVELOPER AND COUNCIL REQUIREMENTS
 ONLY 2K DEPOSIT UNTIL SLAB STAGE^^
 FLOORING THROUGHOUT
 GLASS SPLASH BACK TO KITCHEN
 STAINLESS STEEL DISHWASHER
 ADDITIONAL TELEVISION POINT/S
 6 STAR ENERGY RATING



Speak to our Sales Agent for more information on 1300 001 687.

DEVELOPED BY
Wel.Co

SOLD BY
RPM
 REAL ESTATE GROUP

VISUAL, VERBAL OR WRITTEN PLANS, ILLUSTRATIONS, IMAGES AND INFORMATION ARE IMPRESSIONS OF THORNHILL PARK. THESE PLANS, ILLUSTRATIONS, IMAGES AND INFORMATION (INCLUDING BUT NOT LIMITED TO PRICE, AVAILABILITY, DATES, PLANS, SPECIFICATIONS AND CONSTRUCTION OF PROPOSED FACILITIES AND INFRASTRUCTURE) ARE INDICATIVE DEPICTIONS FOR PRESENTATION PURPOSES ONLY AND ARE BELIEVED TO BE CORRECT AT THE TIME OF PUBLISHING BUT ARE SUBJECT TO CHANGE WITHOUT NOTICE. AREAS, LOCATIONS AND DIMENSIONS ARE APPROXIMATES ONLY AND ARE SUBJECT TO SURVEY. FUTURE TRANSPORT AND OTHER INFRASTRUCTURE AND FACILITIES AND FEATURES ARE PROVIDED FOR IN THE PRECINCT STRUCTURE PLAN BUT THE SIZE AND LOCATION IS SUBJECT TO DELIVERY BY THIRD PARTIES. SITE AND MARKET CONDITIONS, REGULATORY APPROVALS, FINAL PLANS AND OTHER FACTORS AND ARE NOT TO BE RELIED UPON AS NO WARRANTY OR REPRESENTATION IS GIVEN OR TO BE CONSTRUED. PURCHASERS SHOULD MAKE THEIR OWN ENQUIRIES, REVIEW CONTRACTS CAREFULLY AND OBTAIN INDEPENDENT ADVICE BEFORE PURCHASING.