



Odessa 209
\$510,859

ARDEN

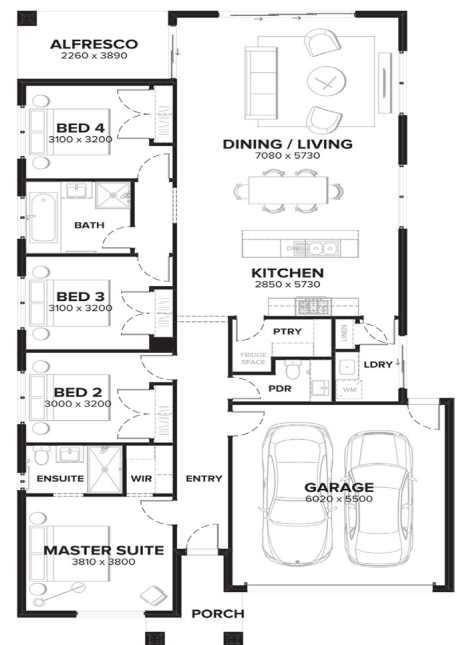
Lot 2442
Area: 400m²
Frontage: 12.5m
Depth: 32m

BED 4 BATH 2 CAR 2

INCLUSIONS

- Fixed site costs and connections
- Council and developer reqs
- Fully rendered Hebel (facade specific)
- Colorbond panel lift garage door with remote control
- 2590mm high ceilings to ground floor
- Floor coverings throughout
- 20mm Caesarstone benchtops to Kitchen
- 900mm Haier stainless steel oven, cooktop and rangehood
- Haier stainless steel fridge/freezer and dishwasher
- Phoenix chrome or matt black tapware

Speak to our Sales Agent for more information on 1300 001 687.



DEVELOPED BY
Wel.Co

SOLD BY
RPM
REAL ESTATE GROUP

VISUAL, VERBAL OR WRITTEN PLANS, ILLUSTRATIONS, IMAGES AND INFORMATION ARE IMPRESSIONS OF THORNHILL PARK. THESE PLANS, ILLUSTRATIONS, IMAGES AND INFORMATION (INCLUDING BUT NOT LIMITED TO PRICE, AVAILABILITY, DATES, PLANS, SPECIFICATIONS AND CONSTRUCTION OF PROPOSED FACILITIES AND INFRASTRUCTURE) ARE INDICATIVE DEPICTIONS FOR PRESENTATION PURPOSES ONLY AND ARE BELIEVED TO BE CORRECT AT THE TIME OF PUBLISHING BUT ARE SUBJECT TO CHANGE WITHOUT NOTICE. AREAS, LOCATIONS AND DIMENSIONS ARE APPROXIMATES ONLY AND ARE SUBJECT TO SURVEY, FUTURE TRANSPORT AND OTHER INFRASTRUCTURE AND FACILITIES AND FEATURES ARE PROVIDED FOR IN THE PRECINCT STRUCTURE PLAN BUT THE SIZE AND LOCATION IS SUBJECT TO DELIVERY BY THIRD PARTIES, SITE AND MARKET CONDITIONS, REGULATORY APPROVALS, FINAL PLANS AND OTHER FACTORS AND ARE NOT TO BE RELIED UPON AS NO WARRANTY OR REPRESENTATION IS GIVEN OR TO BE CONSTRUED. PURCHASERS SHOULD MAKE THEIR OWN ENQUIRIES, REVIEW CONTRACTS CAREFULLY AND OBTAIN INDEPENDENT ADVICE BEFORE PURCHASING.