



The Isabell 26

**TRUE
VALUE**



The Isabell 26 \$540,870

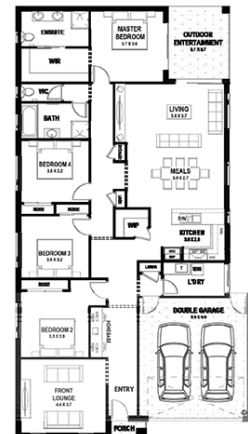
TRUE VALUE HOMES

Lot 1611
Area: 451m²
Frontage: 13.4m
Depth: 31.22m

BED **4** BATH **2** CAR **2**

INCLUSIONS

- Fixed price contract including site cost and connections with H1 class slab.
- Coloured concrete driveway and combined path to your home.
- Lockwood Nexion Vision Mechanical Entry Lockset.
- Corinthian Feature glass front entry door.
- Locks and flyscreens to all openable windows.
- Privacy locks to main bathroom and WC.
- 20mm stone bench to the kitchen with feature shadow line.
- 6-star energy rating with 200L solar hot water system.



Speak to our Sales Agent for more information on 1300 001 687.

